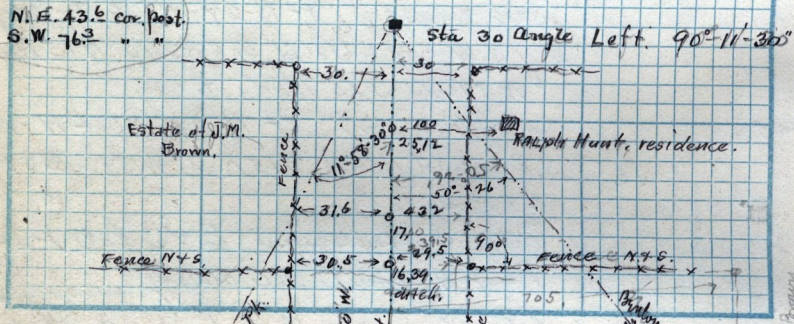


7-6 N.R. 2-E, Brg 7.36 ch E from N.W. cor of S.W. 1/4  
 S 1° 10.7' E 10.10 ch N 1/2 W 11.72 N 8.42 ch W 1/4 ch  
 S 8.47 ch to bry. Also bry at S.E. cor said 1/4 W 1/4  
 N 8.47 ch W 2.00 ch S 1/2 E Edge of 1 ch S 1 1/2 E 107  
 E 2.24 ch N 10.72 ch to bry 23.71 a reserve a  
 right of way 2 rods wide across S. E. end.

26-644 Hammond & Gleason to Jacob Peterson Part of B-27  
 Plot A Huntville Survey Brg S. Rds W 8 Rds S 15 Rds E 8 Rds  
 to bry.

N.E. 43.6 cor. Post.  
 S.W. 76.3 " "



Scale:

Chains per inch.

J.M. Brown Sr. house

Survey on Farley  
 N.E. 1/4 SIMEON FARLEY  
 HOUSE

S.E. 45.6 - N. poplar tree  
 at small gate  
 N.E. 39.3 = N. poplar tree in  
 a row of 9 trees.

